

# GUIDED BY *Giving*





# GUIDED BY Giving

## DEAR FRIENDS & SUPPORTERS,

As we reflect on 2024, we are filled with gratitude for your unwavering support of the Heartland Community Foundation.

This year brought tremendous milestones, including surpassing \$1 million in each of our County Legacy Funds during Match Match — two years ahead of our 10-year goal! We also reached \$4.3 million in total grants awarded since our inception, with \$396,156 granted in just the past fiscal year to drive transformative projects across Ellis, Rooks, and Trego counties.

Our first-ever giving day, Give Fest, in October brought incredible energy and excitement — raising more than \$240,000 communitywide. We also welcomed nearly 20 new funds in 2024, a testament to the lasting power and belief in endowment. The momentum of this year reflects the strength of our shared commitment to creating a brighter future.

This year, we were especially inspired by the enthusiasm of young leaders in our community. During Give Fest, 5th graders from Ellis, Rooks, and Trego counties each received \$10 to donate to a local nonprofit, fostering early understanding of charitable giving. Additionally, our Youth Action Council, comprising dedicated teens, continues to engage in meaningful projects, demonstrating that the future of philanthropy is in capable hands. We also granted money to eight teen-led projects!

Thank you for helping guide us to these incredible achievements. Together, we're lighting the way forward, creating lasting impact for generations to come.

With immense gratitude,

**Sarah Meitner**  
Executive Director

**Josh Dreher**  
President of the Advisory Board



Grant: Famous Figures  
Hays Arts Council



Grant: Historic Hays Walking Tour app  
Ellis County Historical Society



Grant: Playground equipment  
St. Anthony Parish, Schoenchen



New Flooring in Community Room  
St. John Lutheran Church, Ellis

Featured grant recipients on the Cover:  
Downtown Hays Ecology Mural; STEM Harvest event  
with Big Brothers Big Sisters; Ellis Railroad Museum

# '24 YEAR IN REVIEW

**\$9,057,598 TOTAL ASSETS**

**\$396,156 GRANTED, FY2024**

**\$148,025 GRANTED IN ELLIS COUNTY, FY2024**

**\$4.3 MILLION TOTAL GRANTED, SINCE 2007**

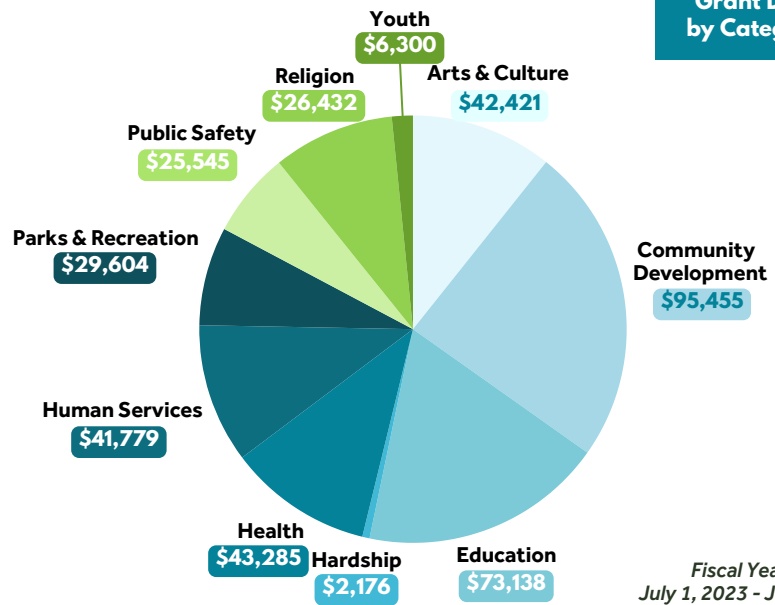
**\$1,046,060 TOTAL RAISED, 549 DONORS, FY2024**

<b>TOTAL DOLLARS RAISED YTD</b> <b>\$1,637,303</b>	<b>TOTAL DOLLARS GRANTED FY2024</b> <b>\$396,156</b>	<b>TOTAL GRANT \$\$ BY COUNTY FY2024</b> Ellis County \$148,025 Rooks County \$116,708 Trego County \$96,372 Other \$34,501	<b>KEY FUND BALANCES YTD</b> Ellis County Legacy Fund \$1,102,368 Rooks County Legacy Fund \$1,079,312 Trego County Legacy Fund \$1,126,615 Heartland Admin Fund \$1,785,645
<b>144 PROJECTS IMPACTED</b>	<b>101 NONPROFITS HELPED</b>	<b>Total Number of Donors YTD</b> <b>737</b>	
<b>Pooled Investment Performance, YTD</b> <b>+15.89%</b> <small>As of 9-30-24</small>	<b>Pooled Investment 10-year Annualized</b> <b>+8.5%</b> <small>As of 9-30-24</small>		

Heartland Community Foundation granted **\$396,156** to **101** nonprofits in fiscal year 2024, supporting their missions and advancing meaningful projects and programs. These grants are made possible by distributing from the investment growth of our action funds, including the County Legacy Funds, allowing the principal balance to continue growing.

Grant dollars were awarded in nine categories, including: **\$95,455** (Comm. Development); **\$73,138** (Education); **\$43,285** (Health); **\$42,421** (Arts/Culture); and **\$41,779** (Human Services).

Thanks to the support of our donors and generous community members, we can make a lasting impact today while ensuring sustainable support for the future.



Fiscal Year 2024 data: July 1, 2023 - June 30, 2024 YTD ending Dec. 30, 2024

## IN 2024, WE WELCOMED TWO NEW EMPLOYEES TO HCF!



**Welcome Savannah Downing**  
Trego County Development Director

Residing in rural Trego County with her husband and five children, Savannah brings years of experience as an educator and a passion for community development. With a background in grant writing and a vision for strengthening rural areas, she is committed to fostering philanthropy and creating opportunities within Trego County.



**Welcome Deanna Hammerschmidt**  
Rooks County Development Director

Living in Plainville with her daughter, Mia, Deanna brings extensive experience in marketing, public relations, and engagement, having been a business owner and community volunteer. She is committed to building strong donor relationships and enhancing quality of life throughout Rooks County.

## "CAUGHT DOING GOOD" VOLUNTEERS CELEBRATED!

In November 2024, HCF recognized 18 local individuals with "Caught Doing Good" awards for their contributions to the community as volunteers! Follow us on Facebook to see even more recipients in 2025!



@HeartlandCF



# FROM GENEROSITY TO IMPACT



**Grant: Bariatric "Manekin"**  
Fort Hays Tech Nursing



**Grant: Safety Equipment**  
Hays High Trap Team



## Victoria Rec. Commission

"This was the first grant I've ever applied for, and I'm so appreciative of the HCF for awarding us the funds to complete one of many small projects. It was a simple process, but the process on your website was so easy and very user friendly. Thank you so much for all that you do in this area and the lives and communities you impact. It doesn't go unnoticed." -- Sean Rodger

## GRANT RECIPIENTS

HCF proudly awarded grant funds to the following organizations between July 1, 2023-June 30, 2024.

### TREGO COUNTY

City of WaKeeney  
City of WaKeeney Transportation Service  
Heritage of Our Forefathers  
Lift Up Wakeeney  
The Well - Center for Hope  
Trego County  
Trego County Chamber of Commerce  
Trego County Historical Society  
Trego County-Lemke Memorial Hospital  
Trego Police Department  
Trego Sky View Foundation  
USD 208 Trego Grade Schoole  
USD 208 Trego High School  
USD 208 Trego Recreation Commission  
USD 208 Trego Special Education  
USD 208 School District  
USD 208 TCHS Wrestling Team  
WaKeeney Saddle Club

### OTHER

Covenant Builders International Ministries  
Decatur Area Development  
Pawnee County Econ. Development  
Scott Hospital Foundation  
Stafford County Economic Development  
Thomas County Community Foundation  
Thomas County Historical Society  
USD 293 Quinter High School  
USD 315 Colby Public Schools  
USD 428 Great Bend Public Schools  
USD 466 Scott County Schools  
Welcome Inn  
Western Plains Arts Association  
Youth Core Ministries

### ELLIS COUNTY

Celebration Community Church  
City of Ellis  
City of Hays Parks Department  
DSNWK  
Downtown Hays  
Ellis County Historical Society  
Ellis County Youth Action Council  
Ellis Recreation Commission  
Ellis USD 388 - Ellis High School  
First Call for Help of Ellis County  
Fort Hays Tech | North Central Fdn.  
Habitat for Humanity of Ellis County  
Hays Area Chamber of Commerce  
Hays Arts Council  
Hays Community Theatre  
Hays Dog Park  
Hays Lions Club  
Hays Public Library  
Hays Recreation Commission  
Hays Senior Center  
HaysMed Foundation  
Jana's Campaign  
Leadership Hays at the Hays Chamber  
Hays Arts Council/FHSU Art Dept.  
St. John's Lutheran Church of Ellis  
St. Joseph Parish Hays  
St. Mary's Parish  
STEM Harvest  
The Arc of Central Plains  
Thomas More Prep-Marian High School  
USD 388 Education Foundation  
USD 489 Foundation Fund  
USD 489 Hays High School  
USD 489 O'Loughlin Elementary  
USD 489 Roosevelt Elementary  
USD 489 Special Education Cooperative

### ROOKS COUNTY

City of Stockton  
City of Stockton Fire Department  
Damar Community Foundation  
City of Damar  
Downtown Stockton  
Downtown Plainville  
Fusion Christian Youth Center  
Plainville After Prom  
Plainville Community Foundation  
Plainville Fire Department  
Plainville Recreation Commission  
Plainville United Methodist Church  
Prairie Faith Shared Ministry  
Rooks County  
Rooks County Free Fair  
Rooks County Golf Course  
Rooks County Health Center  
Rooks County Healthcare Foundation  
Rooks County Historical Society  
Rooks County Sheriff's Office  
Rooks County Youth Action Council  
Rooks County EMS  
Sacred Heart School  
Stockton Methodist Church  
Stockton Methodist Church of Restoration  
Stockton Public Library  
Stockton Recreation Commission  
Stockton Rodders, Inc.  
The Stock Town Foundation  
USD 270 Plainville Schools  
USD 270 Plainville High School  
USD 271 Stockton Junior High School



# BUILDING STRONGER COMMUNITIES

## Fostering Growth Through Philanthropy and Partnerships

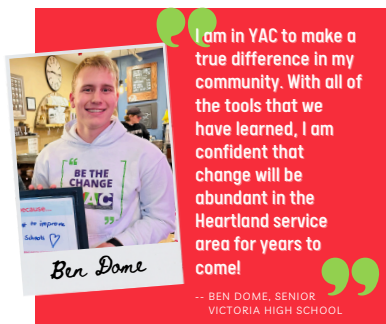
At the Heartland Community Foundation, community development is central to our mission. We believe creating vibrant, thriving communities requires a shared vision and collective action. Through strategic partnerships and investments, we address local challenges, empower organizations, and inspire lasting philanthropy. In 2024, we focused on initiatives that enhance quality of life in Ellis, Rooks, and Trego counties. Our grants supported projects that met immediate needs and created opportunities for long-term growth.

From funding infrastructure improvements to supporting programs that build skills and foster connections, we are committed to uplifting our Heartland communities. Our work extends beyond financial support, as we bring people together to share ideas, tackle challenges, and celebrate progress. Through philanthropy and collaboration, we are proud to contribute to the resilience and prosperity of the communities we serve. Together, we are building a brighter future.

## LEADING THE WAY WITH THE YOUTH ACTION COUNCIL



The Ellis County Youth Action Council is making an impact with their bison statue project, creatively connecting art and local heritage. This initiative involves securing grants and raising funds to artistically paint bison statues that reflect the unique history and culture of the region. Beyond this project, the council meets monthly to discuss topics related to leadership and community improvement. Members review grants and make recommendations for the fall funding cycle, assist with Match Month efforts, and contribute to other foundation activities, showcasing their dedication to community development.



### ELLIS CO. YAC MEMBERS

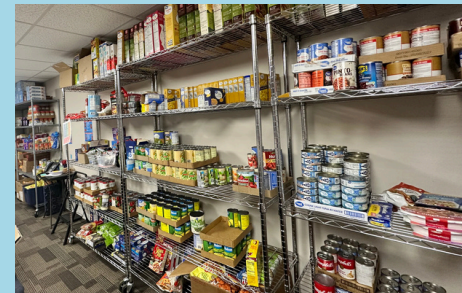
- Benjamin Dome, senior, Victoria High
- Brody Nowak, senior, Victoria High
- Aurora Nowlin, senior Victoria High
- Emma Dinkel, junior, Victoria High
- Brinly Lichter, junior, Victoria High
- Jake Brady, senior, TMP
- Breanna Seiler, senior, TMP
- Tessa Wentling, senior, TMP
- Jenna Brull, junior, TMP
- Brayden Gilmore, junior, TMP
- Hannah Rose, sophomore, TMP

- Charlie Meitner, sophomore, TMP
- Aiden Burton, senior, KAMS/Hays High
- Savannah Clingan, junior, Hays High
- Oaklye Wichers, junior, Hays High
- Ava Biggs, junior, Hays High
- Braylee Kinderknecht, junior, Hays High
- Mariella Dreiling, junior, Hays High
- Kamden McBride, sophomore, Hays High
- Payten Burd, junior, Ellis High
- Addison Kohl, senior, Ellis High
- Taylor Kohl, sophomore, Ellis High
- Isabella Eck, senior, Ellis High



### Hays Senior Center

"Thanks to a Heartland Community Foundation grant, the Hays Senior Center hosted two wonderful events. On September 24, John Makings from Great Bend led an interactive drum experience for everyone to try, and on December 17, the local singing group Trilogy performed at our Christmas program. Both events were made possible with HCF grants, bringing joy and connection to our senior community during the holiday season."



### First Call for Help

"This money has been extremely helpful in keeping our food pantry thriving. Funds were used for food to fill our food pantry. We specifically used the funds for four Kansas Food Bank orders. Then we also had to go to local stores to supplement when we were running low between shipments. We VERY much appreciate this grant and couldn't be more thankful to the Heartland Community Foundation for its continued support to First Call for Help!" --Macey Pfeifer, Executive Director



### Habitat for Humanity of Ellis County

"This grant made it possible to turn the idea of a Habitat for Humanity of Ellis County Community Garden into a reality. Several people have visited and enjoyed checking in on the garden. I have visitors that weed and water the garden on occasion. It has been a wonderful addition to our space! I have met several new contacts that support this space and I know that it will only continue to grow from here!" --Leslie Wyatt, Director

# THE HEART OF GIVING



## SCOTT & NIKKI PFANNENSTIEL

*"A gift to Heartland helps grow the local capacity to award grant dollars to nonprofits in our community that often struggle to find the resources to be innovative. Grant dollars are often the catalyst that gets a nonprofit to the next level of projects, programming, and or services."*



## BRIAN & MICHELLE DEWITT

*"I like giving to the Heartland Community Foundation because I know that the funds stay local and go back to local needs. I choose to give during Match Month because I know that my gift is matched and the dollars are able to make a greater impact."*



## NORM & SANDY KELLER

*"We feel as though we are enhancing the Hays and surrounding communities by donating during Match Month. As small business owners, we have been blessed by the community and this is one small way to give back and enhance the quality of life for others."*

## ESTABLISHED FOUNDATION FUNDS As of December 30, 2024

### ARTS & CULTURE

Damar Community Historical Foundation Fund  
 Ellis County Historical Society Fund for the Future  
 For the HeART of Hays Fund  
 Hays Arts Council Fund  
 Hays Community Theatre Fund  
 Hays Public Library Foundation Fund  
 Oktoberfest Hays VGCA Fund  
 The Society of Friends of Historic Fort Hays Fund  
 Trego County Historical Society Fund  
 Vocal Music & Theatre Fund

### COMMUNITY DEVELOPMENT

Downtown Hays Development Corp. Fund  
 HACC Development & Civic Engagement Fund  
 Hays Beautification Fund  
 Kelly Plaza Project Fund  
 Leadership Hays Children's Fund  
 Leadership Hays Fund  
 "Let's Grow Victoria" Fund  
 Lift Up WaKeeney Fund  
 Plainville Community Foundation Leadership Fund  
 Plainville Community Foundation Youth Fund  
 Youth Action Council -- Ellis County Fund  
 Youth Action Council -- Rooks County Fund  
 Youth Action Council -- Trego County Fund

### COMMUNITY GRANTS

Dane G. Hansen Foundation Pass-Through Fund  
**Ellis County Legacy Fund**  
 Heartland Area Action Fund  
 Heartland Give Fest Match Pool Fund  
**Rooks County Legacy Fund**  
 Stockton Community Fund  
**Trego County Legacy Fund**

### EDUCATION

Ellis High School Booster Club Fund

Fort Hays Tech | North Central Foundation Fund  
 Fort Hays University Foundation Fund  
 Hays High Athletics Hall of Fame Fund  
 Hays Area Children's Center Fund  
 STEM Harvest  
 USD 489 Foundation Fund

### FAITH & RELIGION

First Baptist Church of Hays Fund  
 Sacred Heart Parish and School Fund  
 Stockton United Methodist Church Fund  
 Thomas More Prep-Marian School Fund

### HEALTH & EMERGENCY RESPONSE

Cancer Council of Ellis County Fund  
 Ellis County Disaster Relief Fund  
 First Care Clinic Fund  
 Hays Firefighters Fund  
 Hays Police Endowment Fund  
 HaysMed Foundation Fund  
 Heartland Healthy Living Fund  
 High Plains Mental Health Foundation Fund  
 Kansas Health Foundation for Heartland  
 Plainville Fire Family Legacy Fund  
 Rooks County Disaster Relief Fund  
 Rooks County Health Center  
 Rooks County Healthcare Foundation Fund  
 Trego County Disaster Relief Fund

### PARKS & RECREATION

ARC Park Fund  
 Coronado Area Council, Boy Scouts of America Fund  
 Hays Dog Park Fund  
 Hays Recreation Commission Youth Fund  
 Plainville Kids Wrestling Club Fund  
 Stockton Recreation Commission Fund  
 Trees for a Beautiful Hays Fund

### HUMAN SERVICES

Big Brothers Big Sisters of Ellis County  
 Cancer Council of Ellis County Fund  
 CASA of the High Plains  
 Catholic Charities of Northwest Kansas Heartland Fund  
 Feeding Hays at St. Michael's Fund  
 First Call for Help of Ellis County Fund  
 Hays Senior Center Fund  
 Humane Society of the High Plains Fund  
 Jana's Campaign, Inc. Fund  
 Options Hope & Healing for Victims Fund  
 Recreation Fund for DSNWK, Inc. Clients  
 The Arc of Central Plains Cares Fund  
 The Well - Center for Hope Fund  
 United Way of Ellis County Fund

### OPERATIONS

**Heartland Administrative Fund**

### SCHOLARSHIP

Paul & Terrii Bowman Scholarship  
 Stockton United Methodist Scholarship

### DONOR ADVISED FUNDS

Boeckner Family Fund  
 Ellis County Abstract Charitable Fund  
 Fred & Jean Berger, Insurance Planning Inc. Charitable Fund  
 Luke & Julisa Haines - Roofmasters Charitable Fund  
 Sarah Cearley-Windholz Family & Simply Charmed Fund



# MATCH MONTH

MATCH MONTH

HCF Total Raised

**\$619,389**

Ellis County Total: \$89,363  
 Rooks County Total: \$80,913  
 Trego County Total: \$79,113  
 Hansen/Patterson Match: \$370,000



Heartland Match Month is an annual opportunity to amplify the power of giving across Ellis, Rooks, and Trego counties. Thanks to generous matching funds from the Dane G. Hansen Foundation and Patterson Family Foundation, every dollar donated to participating funds during February is matched, doubling the impact of each gift. In 2024, the community came together in an extraordinary way, raising vital funds to support nonprofit organizations, community projects, and initiatives that improve the quality of life in the Heartland. Match Month highlights the collective strength of our region, proving that when we give together, we achieve greater things.

# GIVE FEST 2024: OCT. 10 GIVING DAY

Total Raised from Donors

**\$243,877**

HCF Match \$\$: \$160,347  
 Combined Impact: \$404,204

Give Fest brought the community together for our first-ever giving day, raising over \$240,000 to support local funds and initiatives. With 45 participating nonprofits, the day featured events and activities that engaged all ages, including local 5th graders who were introduced to the power of philanthropy. Donor dollars strengthened nonprofit endowments, while a match pool of \$160,347 from HCF was granted to organizations for immediate needs. Give Fest showcased the strength of our Heartland, highlighting the lasting impact of giving and the power of community support.



## OUR FOUNDING DONORS

*We are forever grateful to the founding donors who invested in Heartland Community Foundation in its formative years. Although the concept of a community foundation was new, these donors believed that together they would build the community of their dreams.*

Ross & Marianna Beach Fdn.  
Hays Medical Center  
Midwest Energy, Inc.  
Rural Telephone/ Nex-Tech  
Robert E. and Patricia A. Schmidt Foundation  
45  
Adams, Brown, Beran & Ball  
Adronics Elrob Mfg. Corp.  
America's Best Value Vagabond  
Anonymous  
Auto World  
Bank of Hays  
Best Western Butterfield Inn  
Brungardt Hower Ward Elliott & Pfeifer, L.C.  
Cerv's, LLC  
City of Hays  
In Memory of Martha Claflin  
Commerce Bank  
Jeff & Marla Copper  
Dennis & Susan Day  
Eagle Communications, Inc.  
Ellis County Coalition for Economic Development  
Emprise Bank  
First National Bank  
Glassman Corp.  
Great Plains Dermatology  
Hays Area Chamber of Commerce  
Hays Chevrolet  
Henry Schwaller & Associates  
Insurance Planning, Inc.  
Jeter Law Firm, LLP  
Kendall Krug OD PA  
Verlyn L'Heureux  
Lang Diesel, Inc.  
Lifetime Dental Care, PA  
The Meckenstock Group  
Patrick & Chardell Parke  
Steve & Julie Paul  
Verlin & Elaine Pfannenstiel  
RDH Electric, Inc.  
Dave & Jodi Schmidt  
Jeff & Stacey Seibel  
Simply Charmed  
Sunflower Electric Power Corp.  
United Way of Ellis County  
Wal-Mart Store #664  
Bob & Nancy Wertemberger  
Tim & Sandee Werth

## BUILDING A LEGACY

### Your Planned Gift Can Shape the Future of Our Community

Transfer of wealth plays a crucial role in legacy planning, ensuring that the assets accumulated over a lifetime continue to benefit charitable causes for generations to come. As an estimated \$2.7B is set to transfer to the next generation in our Heartland area before 2040, strategic planning is essential to preserve and grow these resources. Planned giving is a powerful way to shape the future. Whether your legacy includes supporting students, children, the elderly, animals, or the community at large, the Heartland Community Foundation is here to help.

1. [Legacy Guidance](#) – Work with our team and our network of local estate planning attorneys to integrate charitable giving into your estate plan. We also offer the opportunity to consult with stewardship consultant John Griffin at no cost.
2. [Impactful Strategies](#) – Explore tax-efficient strategies, such as donor-advised funds or charitable trusts, to maximize your charitable impact while supporting the causes you care about.
3. [Educational Workshops](#) – Attend our estate planning workshops, held throughout the year in Ellis, Rooks, and Trego counties.

### NEW THIS YEAR — THE HCF PIE SOCIETY!

The Heartland Community Foundation is proud to introduce in 2025 the [Heartland Pie Society](#): a communitywide Legacy Giving Society for generous donors who have committed to leaving a portion of their estate — "a piece of their pie" — to charities in the area.

By partnering with the Heartland Community Foundation in their estate plans, members of the [Heartland Pie Society](#) ensure that their charitable wishes will be honored and their impact will endure for future generations. The amount of your gift and the charities are up to you!

#### *Just leave a piece. It's that easy!*

By pledging a portion of your estate and joining the HCF Pie Society, you can help strengthen the Heartland for generations to come.



If community is in your heart, there's no better place than Heartland Community Foundation when considering your estate planning. There's comfort in knowing that I will be able to leave a gift that will keep on giving and support a community that has supported me.

--Nikki Pfannenstiel, Hays

[Reach out at heartland@gscf.org](mailto:heartland@gscf.org) or call 785-621-4090 to get started.

### Heartland Community Foundation Director Named Rural Innovator by the White House



**Sarah Meitner**  
Executive Director

Sarah Meitner, Executive Director of the Heartland Community Foundation, was recognized as a Rural Innovator by the White House in December 2024 for her leadership in rural community development. The sole Kansan honored at the event, Meitner was celebrated for her work in creating inclusive spaces, specifically the Hays ARC Park,

a \$2.1 million playground and splash pad inspired by her son with Down syndrome. Under her leadership, the Heartland Community Foundation has supported local nonprofits, engaged young leaders, and increased its impact on the community. Meitner's recognition highlights the importance of collaboration and innovation in rural areas.



# WITH GRATITUDE TO OUR DONORS

If you believe there is an error or need to make a correction, please contact us.

## INDIVIDUALS

From July 1, 2023-Dec. 30, 2024

Mark & Mary Ahlemeyer  
Sue & Tracy Ahlquist  
Dannie & Catherine Albert  
Doug & Laurie Albin  
Patricia Albrecht  
Nolan & GERALYN Allen  
Charles & Cathryn Allphin  
Chance Anderson  
Dave Anderson  
Anonymous  
Bruce & Amy Annett  
Mendi Anschutz  
Jill Arensdorf  
George & Nancy Arnold  
John & Sara Ashmore  
Jessica & Greg Atkins  
Greg & Debbie Augustine  
Frank Austin  
Joan Balderston  
Thea Baldwin  
Rex & Debbie Ball  
Jason & Megan Ball  
Cindy & Dennis Balthazor  
Mark & Melanie Bannister  
Dave & Lorraine Baughman  
Michael & Jackie Baxter  
Charles & Janis Becker  
John & Wanda Jane Becker  
Joseph & Linda Becker  
Robert L. & Nancy Becker  
Keith & Amy Becker  
Cade & Jessica Beesley  
Eileen Bellairs  
Janice Benedick  
Gary & Sue Benisch  
Don & Linda Bennett  
Tim Benoit  
Kenneth & Barbara Beran  
Brian Berkley  
James E. Berkley  
Jonathan & Nicole Berkley  
John & Malee Berkley  
Mark & Jana Bieker  
Doug & Kori Bigge  
Tammy Billinger  
Brett & Erica Bittel  
Logan & Courtney Bittel  
Roger & Karla Bixenman  
Wesley & Stephanie Bjornstad  
Raile & Kaiti Blackburn  
Lexi Boeck  
Joseph & Jodi Boeckner  
Mark & Jenni Bongartz  
Gerald & Susan Boos  
Scott & Katrene Bormann  
Timothy & Karen Bouchey  
Kyle and Janet Brack  
Bryan & Courtney Brady  
Jerry Braun  
Samuel & Marilyn Braun  
Darla Braun  
James & Deborah Braun  
Edward & Mary Ann Breit  
Alexandra & Joseph Brewster  
Kaylene Brin  
Mike & Dianna Briney  
Shayne, Tierra, & Brogyne Brown  
Denise Brown  
Emery & Delores Brown  
Ernest & Janeen Brown  
Mary Lou Brown  
Nate & Sara Brown  
Jerod & Leann Brown  
Tierra Brown  
Jim & Anne-Marie Brull  
Jen & Chris Brull  
Jim & Michele Brungardt

Curt & Christie Brungardt  
Courtney Brungardt  
Darrin & Michelle Brungardt  
Joslyn Brungardt & Mike McIntyre  
Janice Bunker  
Roger & Leesa Butler  
Sharon Campbell  
Larry or Margie Capers  
Gordon Carlson  
Nichole Carrieri  
Jessica Casey  
Jerry & Karen Casey  
Justin & Megan Casey Family  
Courtney Casey  
Ryan & Traci Cellmer  
Dale & Sherry Chaffin  
Jaycee & Isaac Chambers  
Frank & Theresa Chvatal  
Jayme Clark  
John & Jayne Clarke  
Darrell & Mary Jo Clevenger  
Terrii Bowman Collins  
Adam & Ashley Comeau  
Chuck & Shirley Comeau  
Calvin Comeau  
Adam Conkey  
Larry Connor  
Susan Cooper  
Stan & Jolene Cooper  
Jeff & Marla Copper  
Mona Coupal  
Jean Crawford  
Michael & Nicole Cullison  
Kim Cunningham  
Marco A. Macias, Ph.D.  
Tanner & Shelbe Darnell  
Brenna & Berkley David  
Denise David  
Taylor & Kyle David  
Dustin & Skylin Day  
Dennis & Susan Day  
Kristal Dechant  
Marvin & Machele Dechant  
Amy Degenhardt  
Susan Deges  
E. Jay Deines  
Kent & Ruth Deines  
Gloria Deines  
Stanley Deines  
William & Donna Deines  
Edna Deines  
Ranita Deines  
Jack & Jessica Dennis  
Henry & Mary Desair  
James & Paula Desbien  
Shane & Jami Dewey  
Brian & Michelle Dewitt  
Kenneth & Marjorie Dinkel  
Kurt & Shanna Dinkel  
Taylor Dirks  
Max & Irene Dirks  
Alan & Susan Dirksen  
Andrea Dix  
Grady & Melissa Dixon  
Benjamin Dome  
Jerry & Nancee Donker  
Katie Dorzweiler  
William & Lynn Dowling  
Alan & Diane Downing  
Marc & Savannah Downing  
Tim & Charlene Dreher  
Josh & Jaclynn Dreher  
Marilyn Dreiling  
Stan Dreiling  
Myron & Monica Dreiling  
Frank Dreiling  
Karen & Brian Edwards  
C.L. & Mark Eilts  
Cindy Elliott  
C & J Fabrizius  
Chad & Jessica Fabrizius  
Paul Fabrizius  
Earline Fairbank  
Lawrence Feldt  
Irene Fellhoelter  
James & Teresa Feyerherm  
Dennis Finney  
D.J. & Julie Fischer  
Mary Ann Fisher  
Ray & Joleen Fisher  
Fitzthum Family  
Kelly Flaska  
Kevin & Marci Flax  
Richard & Nancy Flax  
Wendel & Anna Folkerts  
Lorna Ford  
Connie Forssberg  
Jude & Tiffany Fox  
Richard & Brenda Frederking  
Ronald & Elaine Freeman  
Brian & Michelle Frickey  
Jay & Dana Friend  
Darien & Carrie Fritts  
Marie Froelich  
Alan & Dawn Gabel  
Nichole Ganoung  
Sheldon & Linda Ganstrom  
Elizabeth Barton-Garnett  
Arlene Garrett  
Ashley Garrett  
Kent & Dava Gaschler  
Megan Gasper  
Monte & Lisa Gehring  
Brandon & Megan Geist  
Taylor Gordon & Whitney Gerstner  
James Gerstner  
Ida Gerstner  
LaVonne Giess  
Melane Gilbert  
Barry & Donna Gilliland  
Mary Lou Gilliland  
Harrison Gilliland  
Todd Gilliland  
Hope Gillis  
Kenneth & Lisa Gilmore  
Joseph & Linda Glassman  
Linda & Gorman Glaze  
Nathan & Julie Glendening  
Mark & Joni Glendening  
Jacki & Bret Glendening  
Randall & Annette Goering  
Heidi Goff  
Aryn Gosser  
Azlyn Grasser  
David & Tami Green  
Kirk & Stacey Green  
Brian Gribben  
Brent & Clare Gustin  
Daniel & Shelly Haas  
Sheila & Kenneth Hachmeister  
Robert & Mary Jo Hafliger  
Terry & Cheryl Hageman  
Pat & Karen Hageman  
Bart & Donna Hudson Hamilton  
Bob Hamilton  
Hammerschmidt Irrevocable Trust  
Betty Hansen  
Charles & Carol Hansen  
Christopher & Kelli Hansen  
S.C. & Debra K. Harvey  
William S. Harvey Revocable Trust  
Dallas & Dacia Haselhorst  
Daniel & Jennifer Hecker  
Kent & Debra Heckman  
David & Mary Hendricks  
Patrick & Felicia Henke  
Dave & Sonya Herl  
Joe & Cindy Hertel  
Lori Hertel  
Spencer & Kayla Hilbrink  
Fontaine Hilgers  
Jake & Cara Hillard

Henry Hillard  
Brandon & Carrie Hines  
Susan Hines  
Troy & Michele Hixon  
Jon & Jessica Hixson  
Matt Hoernicke  
Art & Ginny Hoernicke  
B.J. & Jean Hoeting  
Terry & Katie Hoff  
Don Hoffman  
Emily Holloway  
Mellisa Holtzman  
Cody & Megan Honas  
Randall & Wendy Honas  
Scott & Jana Horsfall  
Dave Houfek  
Hardy & Dawn Howard  
Raina Hrabe  
Karlene Hrabe  
Carol & Donald Hrabe  
Roger & Leasa Hrabe  
Robert & Natalie Hrabe  
Gloria Huelsmann  
Downer Hull  
Priscilla Hunt  
Roy & Jayne Inlow  
Kay Irsik  
Danny & Sandy Jacobs  
Donald & Connie Jenkins  
Bill & Nancy Jeter  
Charlene Jones  
Deb Jones  
Fred & Pam Joy  
Jennifer Jury  
Michael Karl  
Galen & June Karlin  
Lisa Karlin  
Seth & Julia Kastle  
Douglas & Stacey Keas  
Kerrie Keith  
Norman & Sandy Keller  
Rick & Paula Keltner  
Kim King  
Becky Kiser  
Curt & Jennifer Kitson  
Laurel Klaus  
Trisha and David Koel  
Callie Kolacny  
Robert W. Korpi  
Richard Kraemer  
Elda Kriley  
Theresa & Chris Kriley  
Chris & Julie Kriley  
Steven & Marilyn Kroeger  
Sawyer and Reagan Krone  
Kendall Krug & Katrina Hess Trust  
Robert & Rebecca Kuehl  
Pat & Diane Kuhn  
Larissa Kuhn  
Aaron & Chelsey Ladd  
H. A. & Rozine Lambertson  
Dan & Brianna LaMotte  
Lisa Lane  
Kenton & Sarah LaRosh  
Sonci and Michael Lasley  
Christina Lawver  
Brianna Lee  
Connie Leikam  
Carson & April LeMarr  
Sharon Leuenberger  
Jon & Cynthia Lightle  
Thomas & Charlotte Littrell  
Curtis & Renee Longpine  
Chase & Sadie Look  
Dr. Ernesto & Anna Lopez  
Dr. Jeffrey H & Jana F Lowe  
Christina Lowry  
Mark & Sally Lowry  
Jesse and Anna Luna  
Lois & James Lutz  
Halle J. Lutz

# WITH GRATITUDE TO OUR DONORS

If you believe there is an error or need to make a correction, please contact us.

## CONTINUED

From July 1, 2023-Dec. 30, 2024

Leona Madden  
William Maddy  
Calvin & Joyce Mahin  
Tracy Mahoney  
Doug & Laura Malsam  
Timothy Marcotte  
Susan Marquess  
Kirk and Brady Maska  
Donna Maskus  
T. R. & Susan May  
Stanley & Pamela Mayers  
Robert McAnany  
Christy (Marcotte) McCarty  
Michael & Tammy McClellan  
Robert & Mary Jo McCoy  
Mark & Patty McCullick  
Greg McCune  
Vaughn McMurtrie  
Jerry McReynolds  
Danny S. & Gerri E. Meitler  
Chad & Sarah Meitner  
Monica Michaud  
Gerard & Renee Michaud  
Dennis & Susan Mick  
Maria & Perry Mick  
Jerry & Tammy Miller  
Stacie Minson  
Doug Minson  
Kathy Mitchell  
Eric Moden  
Trey & Alyssa Moeder  
AZ & Jennifer Molina Family  
June Mongeau  
James & Shannon Mongeau  
Lindsey Mongeau  
Mae Moore  
Susanne & Russell Moore  
Robert Morin  
John & Renee Moritz  
Michael & Lorina Morley  
Moroni Family  
Regina Muir  
Conrad Needham  
Glenn Neuburger  
Dale Newcomer  
Thomas & Cassandra Nuckols  
Logan & Christine Numrich  
Terri Nuzum  
Dr. Jerome & Linda Oborny  
James & Ann Ochampaugh  
Lee & Debra Oelkers  
Beth Oller  
Ali Omel  
Michael & Sheri Page  
Sheila Page  
Diana Pantle  
Pat & Kathleen Parke  
Robert & Carol Parker  
Christine Pederson  
Ruth Peters  
James Pfanenstiel  
Brodie & Samantha Pfanenstiel  
Finn Pfanenstiel  
Scott & Nikki Pfanenstiel  
Tuyet Lan Thi Pham  
Patricia J. Phillips  
John & Julie Phillips  
Joan Pickett  
David & Doris Pilatus  
Leon & Margaret Plante  
Robert & Eileen Plante  
Brad & Daphne Plumer  
William & Kay Poland  
Michael & Marlene Pollock  
Caci Pommerehn  
Jason & Michelle Pope  
Mary & Cliff Porterfield

Larry & Michelle Post  
Nikolas Prater  
Kay Prediger  
Brandon & Shaina Prough  
Debby Purinton  
Debra Purk  
Candace Rachel  
Marvin & Jennifer Rack  
Robert & Gloria Rader  
Dr. Richard Rajewski  
Frank & Katie Rajewski  
Charlie & Kathy Ramsay  
Justin & Hillary Randa  
Charles & Louise Reese  
Allen & Connie Rempe  
Chuck Rhoades  
Jaden K. Richardson  
JD & Ginger Riffel  
Carolyn Riggs  
Regina Riley  
John Benkelman & Heather Robben  
James & Kaitlin Robben  
Megan Robl  
Shelly & Rod Rodenbeck  
Mike & Sandi Rogers  
Donald Rohr  
Devin & Megan Rohweder  
Emily Roth  
Dustin & Laney Roths Family  
Diane Ruder  
Andrew & Kathy Rupp  
Kim & Deanna Rupp  
Daniel & Karen Sanchez  
Howard & Mischell Sauer  
Cynthia L. Scanlon  
Catherine Ann Schaukowitch  
Jennifer Schields  
Dan & Mary Kay Schippers  
Mike & Michelle Schlyer  
Gary & Elizabeth Schmeidler  
Heidi Schmeidler  
Col. Allen & Ellen Schmidt  
Greg & Dawn Schmidt  
Tiffany Schmidtberger  
Susan L. Schneider  
Dwight & Susan Schneider  
Colleen Schoenberger  
Betty Schreiner  
Richard & Nancy Schroeder  
Matthew Joseph Schulte  
Brad Schumacher  
Heather Schumacher  
Ginger & Steve Sedbrook  
Darrell G. Seibel  
Christine Settanni  
Justin & Corey Sherrick  
Shona & Daryl Sherraden  
Stan & Bonita Siglinger  
Shay & Sara Simoneau  
Karen Sinclair  
John Stahl & Ernee Sly  
Barbara Smiley  
Keith Smith  
Smith Family  
John & Shelbi Solida  
Chris, Wendy, & Marshall Sook  
Deanne Spencer  
Rob Byer & Brittny Squire  
Kathleen Staab  
Amy Staab  
Gertie Staab  
Jerry & Bonnie Staab  
William Stahl  
Mark Stahl  
Geri Stahl  
Kent & Bette Stamper  
Rick & Jessamyn Staples  
John & Cynthia Steeples  
Don & Tammy Steeples  
Ed & Donna Stehno  
Kathy A. Stenzel

Kyleigh Stice  
Cynthia Goetz Stone  
Gene Stramel  
Glenn & Rhonda Stramet  
Kevin & Cindy Strube  
Patty Stull  
Jennifer Sullivan  
Eric Sumearl  
Nancy Costigan-Talbott  
Troy & April Terry Family  
Dr. Don & Jillayne Tillman  
Denda Trapp  
Gregory & Christine Trogstad  
Mari Tucker  
Wilma Turnbull  
Jeffery & Deborah Turnbull  
Brad & Lisa Unrein  
Neil & Susan Unrein  
Brenda Urban  
Jeff & Carol Vandyke  
Michael & Connie Waite  
Patrick & Charlotte Wanker  
Steven & Brenda Waring  
Sarah Wasinger  
Dana Watts  
Connie Weber  
Rhiannon Weber  
Doug & Sandra Wedermyer  
Marlou Wegener  
Gerald & Pat Wehrli  
Randy & Lora Weigel  
Perry & Janet Weis  
Scott & Meagan Wellbrock  
Robert Wertenberger  
Gene & Pat Westhusing  
Jerry & Peggy White  
Matt & Marlene Whitney  
Eric & Angela Wilds  
Jerry & Margaret Wilson  
Connie Windholz  
Pat Windholz  
Sarah Cearley-Windholz  
Richard & Pamela Windholz  
Dale & Heather Winklepleck  
Colton & Jaci Wise  
Curtis Wolf  
Natalie Wood  
Ruth Yerden  
Neal & Carolyn Younger  
Elaine Younger  
John Ziegler

## BUSINESSES/ORGS

ABC Seamless Siding of Hays  
AdamsBrown, LLC  
Advanced Real Estate-Lyn Klein  
AgShield Crop Insurance Inc.  
Astra Bank  
Auto World  
Bank of Hays  
Bonnie & Clyde Oil, LLC  
Brant's Market LLC  
Brooke Kuntz Accounting Inc  
CASA of the High Plains, Inc.  
CERV'S LLC  
City of Hays  
City of Palco  
City of Plainville  
City of Stockton  
City of WaKeeney  
Classic Quality Body Shop  
Cloud Storage Corp  
Colby Glass & Sign Company  
Commerce Bank  
Commercial Builders, Inc.  
Damar Community Foundation  
Dane C. Hansen Foundation  
Daniel R. Loftus, DDS  
Daughters of Isabella #873  
Dechant Manufacturing  
Deines Construction, Inc.  
Dewey's Mobile Detailing  
Discount Siding Supply, L.P.  
Downing-Nelson Oil Co., Inc.  
Elevate Marketing Resources LLC  
Ellis County Abstract & Title LLC  
Ellis County  
Ellis County Ministerial Alliance  
Ellis High School Booster Club  
Emprise Bank  
eyeSMILE Vision and Dental  
Fabrizius Plumbing  
Farm Bureau Financial Services -  
Hailey Ruggles, Agent  
Farmers National Bank  
Finish Line Lease Service  
First Baptist Church of Hays  
First Call For Help of Ellis County  
First Federal Savings & Loan  
First Kansas Bank  
First State Bank- Plainville  
Frontier Rentals, LLC  
Garrett Insurance  
Gibson Health Mart  
Golden B Hydra Drilling  
Golden Belt Bank, F.S.A.  
Golden Edge Realty, LLC  
Golden Plains Credit Union  
Great Plains Dermatology  
H&C Oil Operating Inc.  
Hadley Foundation Inc  
HHS Athletics Hall of Fame  
Hays Rotary Club  
High Plains Farm Credit  
High Plains Mental Health Center  
High Plains Roofing  
Inheritance Oil  
Insurance Planning, Inc.  
Jeter Law Firm, LLP  
Jones Oil Co. Inc.  
Keller Tank Services II, Inc.  
Keyser Hardware  
KHJ Farms, LLC  
Kiwanis Club of Hays  
Lions Club of WaKeeney, KS  
Lyons Federal Bank-Wakeeney  
M&D Excavating, Inc.  
M&D of Hays, Inc.  
Malay's Market  
Moeders Meats, LLC  
Mongeau Farms  
Mr. K's Foodtown, Inc.  
Nana's Bounty LP  
Nex-Tech  
Nex-Tech Wireless  
North Central Kansas Endowment  
Association  
Nutrien Ag Solutions - WaKeeney  
Outdoor Bank  
Palco Damar Zurich Recreation  
Commission  
Palco High School  
Palmer Hargrave Lighting, LLC  
Parking Spot Properties, LLC  
Penco Engineering, PA  
Plainville Community Foundation  
Plainville Fire Department  
Plainville Insurance, LLC  
Plainville Kids Wrestling Club  
Plainville Recreation Commission  
Platinum Group LLC  
Plumer-Overlease Funeral Home  
PWC, Inc.  
RC Leasing, LLC  
Regeena's Flowers & Events, LLC  
Riedel Garden Center Inc  
Robert E. & Patricia A. Schmidt  
Foundation  
Rooks County  
Rooks County Econ. Development



# WITH GRATITUDE TO OUR DONORS

If you believe there is an error or need to make a correction, please contact us.

## CONTINUED

From July 1, 2023-Dec. 30, 2024

Rooks County Health Center  
Rooks County Health Center Aux.  
Ruder Oil Co  
Ruder Oil Crew  
Sacred Heart Church & School  
Schmitt Funeral Home  
Simply Charmed Boutique  
Solomon Valley Funeral Co., Inc.  
Solutions North Bank Stockton  
Solutions North Bank WaKeeney  
Stahl Products LLC  
STEM Harvest  
Steve's Electric & Roustabout, LLC  
Stockton Area United Fund  
Stockton Recreation Commission  
StrataKan Exploration, LLC  
Sunflower Electric Power Corp.  
Taylor's Aesthetics

The Arc of Central Plains  
The Bank  
The Beach-Edwards Family Fdn.  
The Daily Grind Bakery  
The Keller Company, Inc  
The Meckenstock Group  
The Paisley Pear  
The Well - Center for Hope  
Thomas M. Brown LLC  
Thomas More Prep-Marian  
Thunder on the Plains Car, Truck  
& Cycle Show  
Tracy's Plumbing, Heating, Air  
Conditioning, LLC  
Trash B Gone  
Trego County  
Trego Co. Chamber of Commerce  
Trego County Enhancement Fdn.  
Trego County Historical Society  
Turnbull Advertising  
TWI Insurance Services Inc  
Union Pacific Foundation

USD 208 Recreation Commission  
VFW Auxiliary #3449  
Victoria High School  
Victoria Recreation Commission  
Victoria Youth Action Council  
Volga German Centennial Assoc.  
Werth Wealth Advisors, LLC  
Werth Wealth Management LLC  
Western Carriers, Inc.

In Memory of Andy Betzen  
In Memory of Dr. Darrell & Betty  
Phillips  
In Memory of Fred & Jean Berger  
In Memory of Fred Berger  
In Memory of Gayle M Garrett  
In Memory of Joan & Robert Gilbert  
In Memory of John Fose  
In Memory of Josh Hrabec  
In Memory of Kristi Sook  
In Memory of Mark  
Hammerschmidt  
In Memory of Myron Gerstner  
In Memory of Rodger Dee Taylor  
In Memory of Sam & Mary Ruth  
McCune

## HONORARIUM

In Honor of Brena Mauck  
In Honor of Bridgett Harvey &  
Luke Okolo  
In Honor of John & Karla Ruder  
Family  
In Honor of Leikam & Schrandt  
Families  
In Memory of Allan Weber  
In Memory of Ana Rose Hertel

*Thank you for your generosity and  
commitment to making a difference in  
our community. Your support helps us  
create a brighter future for everyone in  
the Heartland area.*

## OUR MISSION:

*Inspire philanthropy with tools and resources to create community  
prosperity through the power of giving in Ellis, Rooks, and Trego Counties.*

## ADVISORY BOARD



**PRESIDENT**  
**Josh Dreher**  
Hays



**PAST-PRESIDENT**  
**Kelli Hansen**  
Plainville



**SECRETARY**  
**Katie Dorzweiler**  
Hays



**TREASURER**  
**Jude Fox**  
Hays

**For Ellis County:**  
Michael Baxter  
Joslyn Brungardt  
Joleen Fisher  
\*Sandy Jacobs  
\*Nikki Pfannenstiel

**For Trego County**  
Sara Brown  
Trey Moeder  
Cristi Werth  
\*Hardy Howard

**For Rooks County:**  
Kayla Hilbrink  
Donna Hudson-  
Hamilton  
Tammy McClellan  
Mari Tucker  
\*Kathy Ramsay

*\*Denotes Board  
Emeritus*

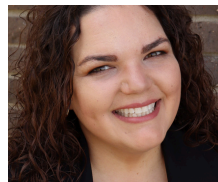
## STAFF



**EXEC. DIRECTOR**  
**Sarah Meitner**  
sarahmeitner@gscf.org



**TREGO DIRECTOR**  
**Savannah Downing**  
savannah@gscf.org



**ROOKS DIRECTOR**  
**Deanna Hammerschmidt**  
deanna@gscf.org

## OFFICES

**1200 MAIN, #102**  
**P.O. BOX 1673,**  
**HAYS, KS 67601**  
**785-621-4090**

**202 W. MILL**  
**PLAINVILLE, KS**  
**67663**  
**785-688-5098**

**110 N. MAIN ST.**  
**WAKEENEY, KS**  
**67672**  
**785-743-3270**

## REGIONAL STAFF

We are an affiliate of Greater Salina Community Foundation

Jessica Martin, **President & Executive Director**  
Rita Northup, **Executive Assistant**  
Michael Chambers, **VP of Community Impact**  
Brandee Mayginn, **Director of Operations**  
Kristin Blake, **Director of Finance**  
Shanna King, **Staff Accountant**  
Jessica Fuller, **Director of Grants & Scholarships**  
Natalie Wood, **Affiliate Relations & Grants**  
Julia Diaz, **Community Impact Team**  
Leah Wilson, **Marketing and Communications**



## ABOUT OUR FUNDS

At Heartland Community Foundation, we connect you with experienced leadership, grantmaking, and resources to make your charitable giving impactful. Whether you want to create a fund that reflects your values or contribute to an existing one, we offer flexible options to bring your philanthropic vision to life. By establishing your own fund, you can create a lasting impact on causes close to your heart, and if you prefer to give to an existing fund, your donation will help strengthen our community's growth and well-being for future generations.

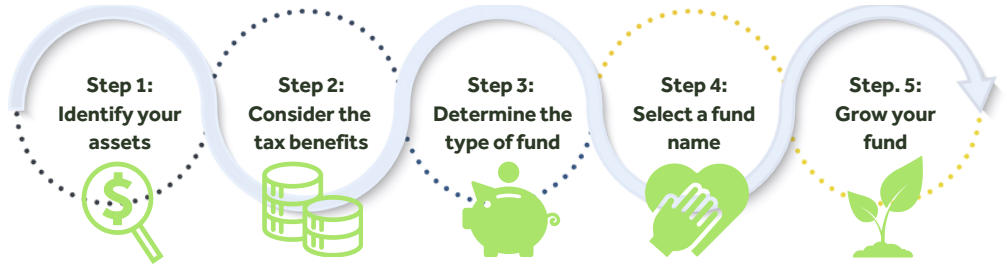
### Who can start a fund?

Anyone! Whether you're an individual, family, business, or organization, you can start a fund at the Heartland Community Foundation. With a minimum of \$2,000, you can establish a fund tailored to your charitable goals, helping you make a lasting impact on the causes you care about most.

### How do I get started?

Our experienced team is happy to discuss your vision and how we can help bring it to life. HCF will guide you through the process, from setting up your fund to making your first grant.

We're here to make your giving meaningful and impactful.



## Types of Funds Available

<b>Donor Advised Fund</b>	Give to the causes YOU care about while creating a lasting legacy in your name. You make grants from your fund to nonprofits now or in the future, ensuring your values continue to make an impact for generations.
<b>Designated Fund</b>	Create a lasting impact by selecting a specific organization to receive annual contributions from your Designated Fund. Your gift ensures continued support for the causes you care about, year after year.
<b>Field of Interest Fund</b>	Support a cause or issue you're passionate about with a Field of Interest Fund. Your gift provides ongoing contributions to nonprofits within a specific area, creating a lasting impact on the community.
<b>Organization Fund</b>	Provides operational support to a specific nonprofit, ensuring they have a reliable source of funding for their ongoing work. This fund offers sustainable support to help the organization meet its long-term goals.
<b>Scholarship Fund</b>	Helps support students' educational goals by providing financial assistance. You can set criteria to target specific groups or fields of study, ensuring your gift supports the areas that matter most to you.
<b>Unrestricted Fund</b>	Give where it's needed most with an Unrestricted Fund. Your contribution provides flexible support to the Heartland Community Foundation, enabling grants to address emerging needs in the community.
<b>Provisional Fund</b>	Fund a special project or initiative with a Provisional Fund. Your gift supports a specific project or program, creating an immediate and lasting impact on the community's most pressing needs.

## Types of assets we accept

We accept a variety of assets to open or contribute to a fund at HCF including cash, stocks, bonds, mutual funds, real estate, grain, oil, farmland, and appreciated assets such as artwork or collectibles. We also accept gifts from retirement accounts, life insurance policies, and more. Our team can help you navigate the options.



## CONTACT US TO LEARN MORE:

1200 Main St., #102  
Hays, KS 67601  
785-621-4090  
Heartland@gscf.org

*Where Giving Does More Good!*  
[www.heartlandcommunityfoundation.org](http://www.heartlandcommunityfoundation.org)