

GUIDED BY Giving



GUIDED BY *Giving*

DEAR FRIENDS & SUPPORTERS,

As we reflect on 2024, we are filled with gratitude for your unwavering support of the Heartland Community Foundation.

This year brought tremendous milestones, including surpassing \$1 million in each of our County Legacy Funds during Match Match — two years ahead of our 10-year goal! We also reached \$4.3 million in total grants awarded since our inception, with \$396,156 granted in just the past fiscal year to drive transformative projects across Ellis, Rooks, and Trego counties.

Our first-ever giving day, Give Fest, in October brought incredible energy and excitement — raising more than \$240,000 communitywide. We also welcomed nearly 20 new funds in 2024, a testament to the lasting power and belief in endowment. The momentum of this year reflects the strength of our shared commitment to creating a brighter future.

This year, we were especially inspired by the enthusiasm of young leaders in our community. During Give Fest, 5th graders from Ellis, Rooks, and Trego counties each received \$10 to donate to a local nonprofit, fostering early understanding of charitable giving. Additionally, our Youth Action Council, comprising dedicated teens, continues to engage in meaningful projects, demonstrating that the future of philanthropy is in capable hands. We also granted money to eight teen-led projects!

Thank you for helping guide us to these incredible achievements. Together, we're lighting the way forward, creating lasting impact for generations to come.

With immense gratitude,

Sarah Meitner
Executive Director

Josh Dreher
President of the Advisory Board



Featured grant recipients on the Cover:
Bleachers for the Rooks County Free Fair; Mural in Damar; Picnic tables for Stockton Chamber of Commerce

'24 YEAR IN REVIEW

\$9,057,598 TOTAL ASSETS

\$396,156 GRANTED, FY2024

\$116,708 GRANTED IN ROOKS COUNTY, FY2024

\$4.3 MILLION TOTAL GRANTED, SINCE 2007

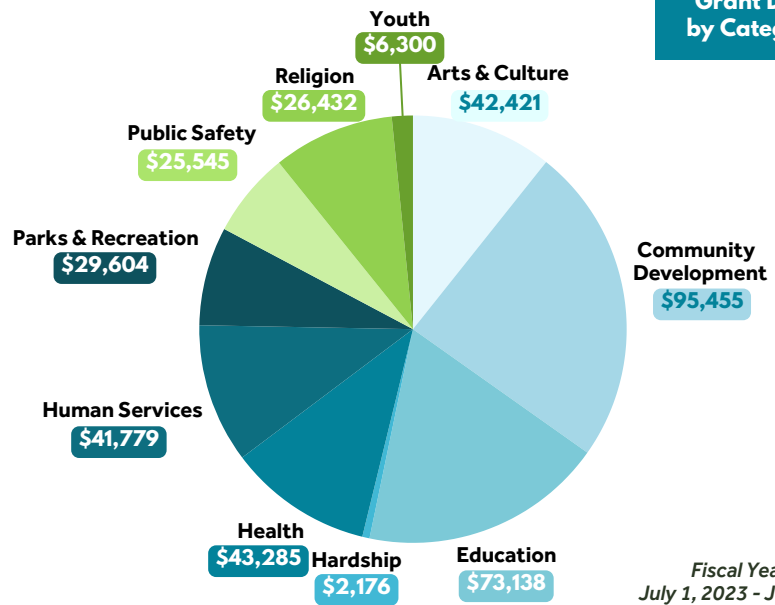
\$1,046,060 TOTAL RAISED, 549 DONORS, FY2024

TOTAL DOLLARS RAISED YTD \$1,637,303	TOTAL DOLLARS GRANTED FY2024 \$396,156	TOTAL GRANT \$\$ BY COUNTY FY2024 Rooks County \$116,708 Ellis County \$148,025 Trego County \$96,372 Other \$34,501	KEY FUND BALANCES YTD Rooks County Legacy Fund \$1,079,312 Ellis County Legacy Fund \$1,102,368 Trego County Legacy Fund \$1,126,615 Heartland Admin Fund \$1,785,645
144 PROJECTS IMPACTED	101 NONPROFITS HELPED	Total Number of Donors YTD 737	
Pooled Investment Performance, YTD +15.89% <small>As of 9-30-24</small>	Pooled Investment 10-year Annualized +8.5% <small>As of 9-30-24</small>		

Heartland Community Foundation granted **\$396,156** to **101** nonprofits in fiscal year 2024, supporting their missions and advancing meaningful projects and programs. These grants are made possible by distributing from the investment growth of our action funds, including the County Legacy Funds, allowing the principal balance to continue growing.

Grant dollars were awarded in nine categories, including: **\$95,455** (Comm. Development); **\$73,138** (Education); **\$43,285** (Health); **\$42,421** (Arts/Culture); and **\$41,779** (Human Services).

Thanks to the support of our donors and generous community members, we can make a lasting impact today while ensuring sustainable support for the future.



Fiscal Year 2024 data: July 1, 2023 - June 30, 2024 YTD ending Dec. 30, 2024

IN 2024, WE WELCOMED TWO NEW EMPLOYEES TO HCF!



Welcome Savannah Downing
Trego County Development Director

Residing in rural Trego County with her husband and five children, Savannah brings years of experience as an educator and a passion for community development. With a background in grant writing and a vision for strengthening rural areas, she is committed to fostering philanthropy and creating opportunities within Trego County.



Welcome Deanna Hammerschmidt
Rooks County Development Director

Living in Plainville with her daughter, Mia, Deanna brings extensive experience in marketing, public relations, and engagement, having been a business owner and community volunteer. She is committed to building strong donor relationships and enhancing quality of life throughout Rooks County.

"CAUGHT DOING GOOD" VOLUNTEERS CELEBRATED!

In November 2024, HCF recognized 18 local individuals with "Caught Doing Good" awards for their contributions to the community as volunteers! Follow us on Facebook to see even more recipients in 2025!



@HeartlandCF

FROM GENEROSITY TO IMPACT



Water Storage Tanks
Rooks County Golf Course



Codell Community Service Club, \$5,000 Grant

"We were able to completely renovate the bathrooms in our Community Center in Codell. The bathrooms were previously inoperable. This allows us to host larger events and patrons of the community can use the building for weddings, family get-togethers and other events free of charge. We are so grateful to the Heartland Community Foundation for helping this become a reality and helping us provide something for our community. The improvements have given the community a new sense of pride being able to provide an amazing facility for families and community members to use and enjoy for a number of different events." -- Jessi Plante

GRANT RECIPIENTS

HCF proudly awarded grant funds to the following organizations between July 1, 2023-June 30, 2024.

TREGO COUNTY

- City of WaKeeney
- City of WaKeeney Transportation Service
- Heritage of Our Forefathers
- Lift Up Wakeeney
- The Well - Center for Hope
- Trego County
- Trego County Chamber of Commerce
- Trego County Historical Society
- Trego County-Lemke Memorial Hospital
- Trego Police Department
- Trego Sky View Foundation
- USD 208 Trego Grade Schoole
- USD 208 Trego High School
- USD 208 Trego Recreation Commission
- USD 208 Trego Special Education
- USD 208 School District
- USD 208 TCHS Wrestling Team
- WaKeeney Saddle Club

OTHER

- Covenant Builders International Ministries.
- Decatur Area Development
- Pawnee County Econ. Development
- Scott Hospital Foundation
- Stafford County Economic Development
- Thomas County Community Foundation
- Thomas County Historical Society
- USD 293 Quinter High School
- USD 315 Colby Public Schools
- USD 428 Great Bend Public Schools
- USD 466 Scott County Schools
- Welcome Inn
- Western Plains Arts Association
- Youth Core Ministries

ELLIS COUNTY

- Celebration Community Church
- City of Ellis
- City of Hays Parks Department
- DSNWK
- Downtown Hays
- Ellis County Historical Society
- Ellis County Youth Action Council
- Ellis Recreation Commission
- Ellis USD 388 - Ellis High School
- First Call for Help of Ellis County
- Fort Hays Tech | North Central Fdn.
- Habitat for Humanity of Ellis County
- Hays Area Chamber of Commerce
- Hays Arts Council
- Hays Community Theatre
- Hays Dog Park
- Hays Lions Club
- Hays Public Library
- Hays Recreation Commission
- Hays Senior Center
- HaysMed Foundation
- Jana's Campaign
- Leadership Hays at the Hays Chamber
- Hays Arts Council/FHSU Art Dept.
- St. John's Lutheran Church of Ellis
- St. Joseph Parish Hays
- St. Mary's Parish
- STEM Harvest
- The Arc of Central Plains
- Thomas More Prep-Marian High School
- USD 388 Education Foundation
- USD 489 Foundation Fund
- USD 489 Hays High School
- USD 489 O'Loughlin Elementary
- USD 489 Roosevelt Elementary
- USD 489 Special Education Cooperative

ROOKS COUNTY

- City of Stockton
- City of Stockton Fire Department
- Damar Community Foundation
- City of Damar
- Downtown Stockton
- Downtown Plainville
- Fusion Christian Youth Center
- Plainville After Prom
- Plainville Community Foundation
- Plainville Fire Department
- Plainville Recreation Commission
- Plainville United Methodist Church
- Prairie Faith Shared Ministry
- Rooks County
- Rooks County Free Fair
- Rooks County Golf Course
- Rooks County Health Center
- Rooks County Healthcare Foundation
- Rooks County Historical Society
- Rooks County Sheriff's Office
- Rooks County Youth Action Council
- Rooks County EMS
- Sacred Heart School
- Stockton Methodist Church
- Stockton Methodist Church of Restoration
- Stockton Public Library
- Stockton Recreation Commission
- Stockton Rodders, Inc.
- The Stock Town Foundation
- USD 270 Plainville Schools
- USD 270 Plainville High School
- USD 271 Stockton Junior High School

BUILDING STRONGER COMMUNITIES

Fostering Growth Through Philanthropy and Partnerships

At the Heartland Community Foundation, community development is central to our mission. We believe creating vibrant, thriving communities requires a shared vision and collective action. Through strategic partnerships and investments, we address local challenges, empower organizations, and inspire lasting philanthropy. In 2024, we focused on initiatives that enhance quality of life in Ellis, Rooks, and Trego counties. Our grants supported projects that met immediate needs and created opportunities for long-term growth.

From funding infrastructure improvements to supporting programs that build skills and foster connections, we are committed to uplifting our Heartland communities. Our work extends beyond financial support, as we bring people together to share ideas, tackle challenges, and celebrate progress. Through philanthropy and collaboration, we are proud to contribute to the resilience and prosperity of the communities we serve. Together, we are building a brighter future.

LEADING THE WAY WITH THE YOUTH ACTION COUNCIL



Youth Action Council is a great way to gain leadership skills. It has brought me some of my best friends and mentors. I am so thankful to be a part of this great council.

Aubrey Kesler

-- AUBREY KESLER, SENIOR
STOCKTON HIGH SCHOOL

ROOKS CO. YAC MEMBERS

- Trinity Couse, junior, Palco High
- Aubrey Kesler, senior, Stockton High
- Cheyenne Hoeting, junior, Stockton High
- Ava Dix, senior, Stockton High
- Bodye Stithem, senior, Stockton High
- Shae Yohon, sophomore, Stockton High
- Ryan Mongeau, senior, Stockton High
- Marlie Dobson, senior, Plainville High
- Kate Hansen, junior, Plainville High
- Taylor Ayers, senior, Plainville High
- Chasey Bittel, junior, Plainville High
- Shelby Molina, sophomore, Plainville High
- Tucker Rudman, Plainville High

The Rooks County Youth Action Council has made a significant impact this year with their efforts to enhance local communities through art and civic engagement. The highlight of their work in 2024 was the Palco team, who successfully facilitated the addition of two vibrant murals in Palco and Damar, celebrating local culture and heritage. In addition to these artistic endeavors, the council meets monthly to discuss leadership and community improvement, review grants, make recommendations for the fall funding cycle, and support various foundation activities. Their dedication to community development and their ability to bring art into public spaces have enriched the region and inspired further community involvement.



Plainville Recreation Commission

"We had to remove the old children's play area due to safety concerns, and we did not have anything at the ballpark for kids to use during games and practices. We wanted to provide a children's play area for kids to use while they were attending games and practices. We wanted it to be equipment of good quality and provide active play for the kids. Through the whole process we had to keep the children's area off limits until it was complete, and it was fun to see the kids so excited and anticipating the opening of the area." -- Tanya Meyers

New Murals in Damar and Palco



The Heartland Youth Action Council (YAC) proudly completed vibrant postcard-style murals in Damar and Palco, led by Kenzie Wells, Trinity Couse, and Lucina Parsons. The 34-foot mural in Damar honors its French Canadian settlers, rich oil and agricultural heritage, St. Joseph's parish, a Western Meadowlark, and colorful Maple leaves. In Palco, the 38-foot mural celebrates "Rooster Nation" and fertile farmland. Painted by Hill City artist Layne Stafford, this teen-led project, supported by the Heartland Community Foundation and Kansas Department of Commerce's Office of Rural Prosperity, leaves a lasting legacy.

THE HEART OF GIVING



BRAD & DAPHNE PLUMER

"Giving locally is the most impactful way to contribute. We appreciate HCF for its collective giving approach, which maximizes donations and allows for funding larger projects within our community. Additionally, the endowment option ensures a lasting legacy."



JUSTIN & MEGAN CASEY

"Giving to Heartland has always been an easy choice for us. As a couple who grew up in this community and choose to raise our children here, we see the positive impacts of the foundation. We look forward to playing a small part in helping our community thrive for years to come."



TIM HAS & KAREN BOUCHEY

"We always donate to the Heartland Community Foundation, particularly when there are matching funds. It's a wonderful way to double the impact of our contribution and help fund the important projects that benefit our community."

ESTABLISHED FOUNDATION FUNDS As of December 30, 2024

ARTS & CULTURE

Damar Community Historical Foundation Fund
 Ellis County Historical Society Fund for the Future
 For the HeART of Hays Fund
 Hays Arts Council Fund
 Hays Community Theatre Fund
 Hays Public Library Foundation Fund
 Oktoberfest Hays VGCA Fund
 The Society of Friends of Historic Fort Hays Fund
 Trego County Historical Society Fund
 Vocal Music & Theatre Fund

COMMUNITY DEVELOPMENT

Downtown Hays Development Corp. Fund
 HACC Development & Civic Engagement Fund
 Hays Beautification Fund
 Kelly Plaza Project Fund
 Leadership Hays Children's Fund
 Leadership Hays Fund
 "Let's Grow Victoria" Fund
 Lift Up WaKeeney Fund
 Plainville Community Foundation Leadership Fund
 Plainville Community Foundation Youth Fund
 Youth Action Council -- Ellis County Fund
 Youth Action Council -- Rooks County Fund
 Youth Action Council -- Trego County Fund

COMMUNITY GRANTS

Dane G. Hansen Foundation Pass-Through Fund
Ellis County Legacy Fund
 Heartland Area Action Fund
 Heartland Give Fest Match Pool Fund
Rooks County Legacy Fund
 Stockton Community Fund
Trego County Legacy Fund

EDUCATION

Ellis High School Booster Club Fund

Fort Hays Tech | North Central Foundation Fund
 Fort Hays University Foundation Fund
 Hays High Athletics Hall of Fame Fund
 Hays Area Children's Center Fund
 STEM Harvest
 USD 489 Foundation Fund

FAITH & RELIGION

First Baptist Church of Hays Fund
 Sacred Heart Parish and School Fund
 Stockton United Methodist Church Fund
 Thomas More Prep-Marian School Fund

HEALTH & EMERGENCY RESPONSE

Cancer Council of Ellis County Fund
 Ellis County Disaster Relief Fund
 First Care Clinic Fund
 Hays Firefighters Fund
 Hays Police Endowment Fund
 HaysMed Foundation Fund
 Heartland Healthy Living Fund
 High Plains Mental Health Foundation Fund
 Kansas Health Foundation for Heartland
 Plainville Fire Family Legacy Fund
 Rooks County Disaster Relief Fund
 Rooks County Health Center
 Rooks County Healthcare Foundation Fund
 Trego County Disaster Relief Fund

PARKS & RECREATION

ARC Park Fund
 Coronado Area Council, Boy Scouts of America Fund
 Hays Dog Park Fund
 Hays Recreation Commission Youth Fund
 Plainville Kids Wrestling Club Fund
 Stockton Recreation Commission Fund
 Trees for a Beautiful Hays Fund

HUMAN SERVICES

Big Brothers Big Sisters of Ellis County
 Cancer Council of Ellis County Fund
 CASA of the High Plains
 Catholic Charities of Northwest Kansas Heartland Fund
 Feeding Hays at St. Michael's Fund
 First Call for Help of Ellis County Fund
 Hays Senior Center Fund
 Humane Society of the High Plains Fund
 Jana's Campaign, Inc. Fund
 Options Hope & Healing for Victims Fund
 Recreation Fund for DSNWK, Inc. Clients
 The Arc of Central Plains Cares Fund
 The Well - Center for Hope Fund
 United Way of Ellis County Fund

OPERATIONS

Heartland Administrative Fund

SCHOLARSHIP

Paul & Terri Bowman Scholarship
 Stockton United Methodist Scholarship

DONOR ADVISED FUNDS

Boeckner Family Fund
 Ellis County Abstract Charitable Fund
 Fred & Jean Berger, Insurance Planning Inc. Charitable Fund
 Luke & Julisa Haines - Roofmasters Charitable Fund
 Sarah Cearley-Windholz Family & Simply Charmed Fund

MATCH MONTH

MATCH MONTH

HCF Total Raised

\$619,389

Rooks County Total: \$80,913

Ellis County Total: \$89,363

Trego County Total: \$79,113

Hansen/Patterson Match: \$370,000



Heartland Match Month is an annual opportunity to amplify the power of giving across Ellis, Rooks, and Trego counties. Thanks to generous matching funds from the Dane G. Hansen Foundation and Patterson Family Foundation, every dollar donated to participating funds during February is matched, doubling the impact of each gift. In 2024, the community came together in an extraordinary way, raising vital funds to support nonprofit organizations, community projects, and initiatives that improve the quality of life in the Heartland. Match Month highlights the collective strength of our region, proving that when we give together, we achieve greater things.

GIVE FEST 2024: OCT. 10 GIVING DAY

Total Raised from Donors

\$243,877

HCF Match \$\$: \$160,347

Combined Impact: \$404,204



Give Fest brought the community together for our first-ever giving day, raising over \$240,000 to support local funds and initiatives. With 45 participating nonprofits, the day featured events and activities that engaged all ages, including local 5th graders who were introduced to the power of philanthropy. Donor dollars strengthened nonprofit endowments, while a match pool of \$160,347 from HCF was granted to organizations for immediate needs. Give Fest showcased the strength of our Heartland, highlighting the lasting impact of giving and the power of community support.



OUR FOUNDING DONORS

We are forever grateful to the founding donors who invested in Heartland Community Foundation in its formative years. Although the concept of a community foundation was new, these donors believed that together they would build the community of their dreams.

Ross & Marianna Beach Fdn.
 Hays Medical Center
 Midwest Energy, Inc.
 Rural Telephone/ Nex-Tech
 Robert E. and Patricia A. Schmidt Foundation
 4 5
 Adams, Brown, Beran & Ball
 Adronics Elrob Mfg. Corp.
 America's Best Value Vagabond
 Anonymous
 Auto World
 Bank of Hays
 Best Western Butterfield Inn
 Brungardt Hower Ward Elliott & Pfeifer, L.C.
 Cerv's, LLC
 City of Hays
 In Memory of Martha Claflin
 Commerce Bank
 Jeff & Marla Copper
 Dennis & Susan Day
 Eagle Communications, Inc.
 Ellis County Coalition for Economic Development
 Emprise Bank
 First National Bank
 Glassman Corp.
 Great Plains Dermatology
 Hays Area Chamber of Commerce
 Hays Chevrolet
 Henry Schwaller & Associates
 Insurance Planning, Inc.
 Jeter Law Firm, LLP
 Kendall Krug OD PA
 Verlyn L'Heureux
 Lang Diesel, Inc.
 Lifetime Dental Care, PA
 The Meckenstock Group
 Patrick & Chardell Parke
 Steve & Julie Paul
 Verlin & Elaine Pfannenstiel
 RDH Electric, Inc.
 Dave & Jodi Schmidt
 Jeff & Stacey Seibel
 Simply Charmed
 Sunflower Electric Power Corp.
 United Way of Ellis County
 Wal-Mart Store #664
 Bob & Nancy Wertemberger
 Tim & Sandee Werth

BUILDING A LEGACY

Your Planned Gift Can Shape the Future of Our Community

Transfer of wealth plays a crucial role in legacy planning, ensuring that the assets accumulated over a lifetime continue to benefit charitable causes for generations to come. As an estimated \$XM is set to transfer to the next generation in our Heartland area before 2040, strategic planning is essential to preserve and grow these resources. Planned giving is a powerful way to shape the future. Whether your legacy includes supporting students, children, the elderly, animals, or the community at large, the Heartland Community Foundation is here to help.

1. [Legacy Guidance](#) – Work with our team and our network of local estate planning attorneys to integrate charitable giving into your estate plan. We also offer the opportunity to consult with stewardship consultant John Griffin at no cost.
2. [Impactful Strategies](#) – Explore tax-efficient strategies, such as donor-advised funds or charitable trusts, to maximize your charitable impact while supporting the causes you care about.
3. [Educational Workshops](#) – Attend our estate planning workshops, held throughout the year in Ellis, Rooks, and Trego counties.

NEW THIS YEAR — THE HCF PIE SOCIETY!

The Heartland Community Foundation is proud to introduce in 2025 the [Heartland Pie Society](#): a communitywide Legacy Giving Society for generous donors who have committed to leaving a portion of their estate — "a piece of their pie" — to charities in the area.

By partnering with the Heartland Community Foundation in their estate plans, members of the [Heartland Pie Society](#) ensure that their charitable wishes will be honored and their impact will endure for future generations. The amount of your gift and the charities are up to you!

Just leave a piece. It's that easy!

By pledging a portion of your estate and joining the HCF Pie Society, you can help strengthen the Heartland for generations to come.



If community is in your heart, there's no better place than Heartland Community Foundation when considering your estate planning. There's comfort in knowing that I will be able to leave a gift that will keep on giving and support a community that has supported me.

--Nikki Pfannenstiel, Hays

[Reach out at heartland@gscf.org](mailto:heartland@gscf.org) or call 785-621-4090 to get started.

Heartland Community Foundation Director Named Rural Innovator by the White House



Sarah Meitner
 Executive Director

Sarah Meitner, Executive Director of the Heartland Community Foundation, was recognized as a Rural Innovator by the White House in December 2024 for her leadership in rural community development. The sole Kansan honored at the event, Meitner was celebrated for her work in creating inclusive spaces, specifically the Hays ARC Park,

a \$2.1 million playground and splash pad inspired by her son with Down syndrome. Under her leadership, the Heartland Community Foundation has supported local nonprofits, engaged young leaders, and increased its impact on the community. Meitner's recognition highlights the importance of collaboration and innovation in rural areas.

WITH GRATITUDE TO OUR DONORS

If you believe there is an error or need to make a correction, please contact us.

INDIVIDUALS

From July 1, 2023-Dec. 30, 2024

Mark & Mary Ahlemeyer
Sue & Tracy Ahlquist
Dannie & Catherine Albert
Doug & Laurie Albin
Patricia Albrecht
Nolan & GERALYN Allen
Charles & Cathryn Allphin
Chance Anderson
Dave Anderson
Anonymous
Bruce & Amy Annett
Mendi Anschutz
Jill Arensdorf
George & Nancy Arnold
John & Sara Ashmore
Jessica & Greg Atkins
Greg & Debbie Augustine
Frank Austin
Joan Balderston
Thea Baldwin
Rex & Debbie Ball
Jason & Megan Ball
Cindy & Dennis Balthazor
Mark & Melanie Bannister
Dave & Lorraine Baughman
Michael & Jackie Baxter
Charles & Janis Becker
John & Wanda Jane Becker
Joseph & Linda Becker
Robert L. & Nancy Becker
Keith & Amy Becker
Cade & Jessica Beesley
Eileen Bellairs
Janice Benedick
Gary & Sue Benisch
Don & Linda Bennett
Tim Benoit
Kenneth & Barbara Beran
Brian Berkley
James E. Berkley
Jonathan & Nicole Berkley
John & Malee Berkley
Mark & Jana Bieker
Doug & Kori Bigge
Tammy Billinger
Brett & Erica Bittel
Logan & Courtney Bittel
Roger & Karla Bixenman
Wesley & Stephanie Bjornstad
Raile & Kaiti Blackburn
Lexi Boeck
Joseph & Jodi Boeckner
Mark & Jenni Bongartz
Gerald & Susan Boos
Scott & Katrene Bormann
Timothy & Karen Bouchey
Kyle and Janet Brack
Bryan & Courtney Brady
Jerry Braun
Samuel & Marilyn Braun
Darla Braun
James & Deborah Braun
Edward & Mary Ann Breit
Alexandra & Joseph Brewster
Kaylene Brin
Mike & Dianna Briney
Shayne, Tierra, & Brogyne Brown
Denise Brown
Emery & Delores Brown
Ernest & Janeen Brown
Mary Lou Brown
Nate & Sara Brown
Jerod & Leann Brown
Tierra Brown
Jim & Anne-Marie Brull
Jen & Chris Brull
Jim & Michele Brungardt

Curt & Christie Brungardt
Courtney Brungardt
Darrin & Michelle Brungardt
Joslyn Brungardt & Mike McIntyre
Janice Bunker
Roger & Leesa Butler
Sharon Campbell
Larry or Margie Capers
Gordon Carlson
Nichole Carrieri
Jessica Casey
Jerry & Karen Casey
Justin & Megan Casey Family
Courtney Casey
Ryan & Traci Cellmer
Dale & Sherry Chaffin
Jaycee & Isaac Chambers
Frank & Theresa Chvatal
Jayme Clark
John & Jayne Clarke
Darrell & Mary Jo Clevenger
Terri Bowman Collins
Adam & Ashley Comeau
Chuck & Shirley Comeau
Calvin Comeau
Adam Conkey
Larry Connor
Susan Cooper
Stan & Jolene Cooper
Jeff & Marla Copper
Mona Coupal
Jean Crawford
Michael & Nicole Cullison
Kim Cunningham
Marco A. Macias, Ph.D.
Tanner & Shelbe Darnell
Brenna & Berkley David
Denise David
Taylor & Kyle David
Dustin & Skylin Day
Dennis & Susan Day
Kristal Dechant
Marvin & Machele Dechant
Amy Degenhardt
Susan Deges
E. Jay Deines
Kent & Ruth Deines
Gloria Deines
Stanley Deines
William & Donna Deines
Edna Deines
Ranita Deines
Jack & Jessica Dennis
Henry & Mary Desair
James & Paula Desbien
Shane & Jami Dewey
Brian & Michelle Dewitt
Kenneth & Marjorie Dinkel
Kurt & Shanna Dinkel
Taylor Dirks
Max & Irene Dirks
Alan & Susan Dirksen
Andrea Dix
Grady & Melissa Dixon
Benjamin Dome
Jerry & Nancee Donker
Katie Dorzweiler
William & Lynn Dowling
Alan & Diane Downing
Marc & Savannah Downing
Tim & Charlene Dreher
Josh & Jaclynn Dreher
Marilyn Dreiling
Stan Dreiling
Myron & Monica Dreiling
Frank Dreiling
Karen & Brian Edwards
C.L. & Mark Eilts
Cindy Elliott
C & J Fabrizius
Chad & Jessica Fabrizius

Paul Fabrizius
Earline Fairbank
Lawrence Feldt
Irene Fellhoelter
James & Teresa Feyerherm
Dennis Finney
D.J. & Julie Fischer
Mary Ann Fisher
Ray & Joleen Fisher
Fitzthum Family
Kelly Flaska
Kevin & Marci Flax
Richard & Nancy Flax
Wendel & Anna Folkerts
Lorna Ford
Connie Forssberg
Jude & Tiffany Fox
Richard & Brenda Frederking
Ronald & Elaine Freeman
Brian & Michelle Frickey
Jay & Dana Friend
Darien & Carrie Fritts
Marie Froelich
Alan & Dawn Gabel
Nichole Ganoung
Sheldon & Linda Ganstrom
Elizabeth Barton-Garnett
Arlene Garrett
Ashley Garrett
Kent & Dava Gaschler
Megan Gasper
Monte & Lisa Gehring
Brandon & Megan Geist
Taylor Gordon & Whitney Gerstner
James Gerstner
Ida Gerstner
LaVonne Giess
Melane Gilbert
Barry & Donna Gilliland
Mary Lou Gilliland
Harrison Gilliland
Todd Gilliland
Hope Gillis
Kenneth & Lisa Gilmore
Joseph & Linda Glassman
Linda & Gorman Glaze
Nathan & Julie Glendening
Mark & Joni Glendening
Jacki & Bret Glendening
Randall & Annette Goering
Heidi Goff
Aryn Gosser
Azlyn Grasser
David & Tami Green
Kirk & Stacey Green
Brian Gribben
Brent & Clare Gustin
Daniel & Shelly Haas
Sheila & Kenneth Hachmeister
Robert & Mary Jo Hafliger
Terry & Cheryl Hageman
Pat & Karen Hageman
Bart & Donna Hudson Hamilton
Bob Hamilton
Hammerschmidt Irrevocable Trust
Betty Hansen
Charles & Carol Hansen
Christopher & Kelli Hansen
S.C. & Debra K. Harvey
William S. Harvey Revocable Trust
Dallas & Dacia Haselhorst
Daniel & Jennifer Hecker
Kent & Debra Heckman
David & Mary Hendricks
Patrick & Felicia Henke
Dave & Sonya Herl
Joe & Cindy Hertel
Lori Hertel
Spencer & Kayla Hilbrink
Fontaine Hilgers
Jake & Cara Hillard

Henry Hillard
Brandon & Carrie Hines
Susan Hines
Troy & Michele Hixon
Jon & Jessica Hixson
Matt Hoernicke
Art & Ginny Hoernicke
B.J. & Jean Hoeting
Terry & Katie Hoff
Don Hoffman
Emily Holloway
Mellisa Holtzman
Cody & Megan Honas
Randall & Wendy Honas
Scott & Jana Horsfall
Dave Houfek
Hardy & Dawn Howard
Raina Hrabe
Karlene Hrabe
Carol & Donald Hrabe
Roger & Leasa Hrabe
Robert & Natalie Hrabe
Gloria Huelsmann
Downer Hull
Priscilla Hunt
Roy & Jayne Inlow
Kay Irsik
Danny & Sandy Jacobs
Donald & Connie Jenkins
Bill & Nancy Jeter
Charlene Jones
Deb Jones
Fred & Pam Joy
Jennifer Jury
Michael Karl
Galen & June Karlin
Lisa Karlin
Seth & Julia Kastle
Douglas & Stacey Keas
Kerrie Keith
Norman & Sandy Keller
Rick & Paula Keltner
Kim King
Becky Kiser
Curt & Jennifer Kitson
Laurel Klaus
Trisha and David Koel
Callie Kolacny
Robert W. Korpi
Richard Kraemer
Elda Kriley
Theresa & Chris Kriley
Chris & Julie Kriley
Steven & Marilyn Kroeger
Sawyer and Reagan Krone
Kendall Krug & Katrina Hess Trust
Robert & Rebecca Kuehl
Pat & Diane Kuhn
Larissa Kuhn
Aaron & Chelsey Ladd
H. A. & Rozine Lambertson
Dan & Brianna LaMotte
Lisa Lane
Kenton & Sarah LaRosh
Sonci and Michael Lasley
Christina Lawver
Brianna Lee
Connie Leikam
Carson & April LeMarr
Sharon Leuenberger
Jon & Cynthia Lightle
Thomas & Charlotte Littrell
Curtis & Renee Longpine
Chase & Sadie Look
Dr. Ernesto & Anna Lopez
Dr. Jeffrey H & Jana F Lowe
Christina Lowry
Mark & Sally Lowry
Jesse and Anna Luna
Lois & James Lutz
Halle J. Lutz

WITH GRATITUDE TO OUR DONORS

If you believe there is an error or need to make a correction, please contact us.

CONTINUED

From July 1, 2023-Dec. 30, 2024

Leona Madden
William Maddy
Calvin & Joyce Mahin
Tracy Mahoney
Doug & Laura Malsam
Timothy Marcotte
Susan Marquess
Kirk and Brady Maska
Donna Maskus
T. R. & Susan May
Stanley & Pamela Mayers
Robert McAnany
Christy (Marcotte) McCarty
Michael & Tammy McClellan
Robert & Mary Jo McCoy
Mark & Patty McCullick
Greg McCune
Vaughn McMurtrie
Jerry McReynolds
Danny S. & Gerri E. Meitler
Chad & Sarah Meitner
Monica Michaud
Gerard & Renee Michaud
Dennis & Susan Mick
Maria & Perry Mick
Jerry & Tammy Miller
Stacie Minson
Doug Minson
Kathy Mitchell
Eric Moden
Trey & Alyssa Moeder
AZ & Jennifer Molina Family
June Mongeau
James & Shannon Mongeau
Lindsey Mongeau
Mae Moore
Susanne & Russell Moore
Robert Morin
John & Renee Moritz
Michael & Lorina Morley
Moroni Family
Regina Muir
Conrad Needham
Glenn Neuburger
Dale Newcomer
Thomas & Cassandra Nuckols
Logan & Christine Numrich
Terri Nuzum
Dr. Jerome & Linda Oborny
James & Ann Ochampaugh
Lee & Debra Oelkers
Beth Oller
Ali Omel
Michael & Sheri Page
Sheila Page
Diana Pantle
Pat & Kathleen Parke
Robert & Carol Parker
Christine Pederson
Ruth Peters
James Pfanenstiel
Brodie & Samantha Pfanenstiel
Finn Pfanenstiel
Scott & Nikki Pfanenstiel
Tuyet Lan Thi Pham
Patricia J. Phillips
John & Julie Phillips
Joan Pickett
David & Doris Pilatus
Leon & Margaret Plante
Robert & Eileen Plante
Brad & Daphne Plumer
William & Kay Poland
Michael & Marlene Pollock
Caci Pommerehn
Jason & Michelle Pope
Mary & Cliff Porterfield

Larry & Michelle Post
Nikolas Prater
Kay Prediger
Brandon & Shaina Prough
Debby Purinton
Debra Purk
Candace Rachel
Marvin & Jennifer Rack
Robert & Gloria Rader
Dr. Richard Rajewski
Frank & Katie Rajewski
Charlie & Kathy Ramsay
Justin & Hillary Randa
Charles & Louise Reese
Allen & Connie Rempe
Chuck Rhoades
Jaden K. Richardson
JD & Ginger Riffel
Carolyn Riggs
Regina Riley
John Benkelman & Heather Robben
James & Kaitlin Robben
Megan Robl
Shelly & Rod Rodenbeck
Mike & Sandi Rogers
Donald Rohr
Devin & Megan Rohweder
Emily Roth
Dustin & Laney Roths Family
Diane Ruder
Andrew & Kathy Rupp
Kim & Deanna Rupp
Daniel & Karen Sanchez
Howard & Mischell Sauer
Cynthia L. Scanlon
Catherine Ann Schaukowitch
Jennifer Schields
Dan & Mary Kay Schippers
Mike & Michelle Schlyer
Gary & Elizabeth Schmeidler
Heidi Schmeidler
Col. Allen & Ellen Schmidt
Greg & Dawn Schmidt
Tiffany Schmidtberger
Susan L. Schneider
Dwight & Susan Schneider
Colleen Schoenberger
Betty Schreiner
Richard & Nancy Schroeder
Matthew Joseph Schulte
Brad Schumacher
Heather Schumacher
Ginger & Steve Sedbrook
Darrell G. Seibel
Christine Settanni
Justin & Corey Sherrick
Shona & Daryl Sherraden
Stan & Bonita Siglinger
Shay & Sara Simoneau
Karen Sinclair
John Stahl & Ernee Sly
Barbara Smiley
Keith Smith
Smith Family
John & Shelbi Solida
Chris, Wendy, & Marshall Sook
Deanne Spencer
Rob Byer & Brittny Squire
Kathleen Staab
Amy Staab
Gertie Staab
Jerry & Bonnie Staab
William Stahl
Mark Stahl
Geri Stahl
Kent & Bette Stamper
Rick & Jessamyn Staples
John & Cynthia Steeples
Don & Tammy Steeples
Ed & Donna Stehno
Kathy A. Stenzel

Kyleigh Stice
Cynthia Goetz Stone
Gene Stramel
Glenn & Rhonda Stramet
Kevin & Cindy Strube
Patty Stull
Jennifer Sullivan
Eric Sumearl
Nancy Costigan-Talbott
Troy & April Terry Family
Dr. Don & Jillayne Tillman
Denda Trapp
Gregory & Christine Trogstad
Mari Tucker
Wilma Turnbull
Jeffery & Deborah Turnbull
Brad & Lisa Unrein
Neil & Susan Unrein
Brenda Urban
Jeff & Carol Vandyke
Michael & Connie Waite
Patrick & Charlotte Wanker
Steven & Brenda Waring
Sarah Wasinger
Dana Watts
Connie Weber
Rhiannon Weber
Doug & Sandra Wedermyer
Marlou Wegener
Gerald & Pat Wehrli
Randy & Lora Weigel
Perry & Janet Weis
Scott & Meagan Wellbrock
Robert Wertenberger
Gene & Pat Westhusing
Jerry & Peggy White
Matt & Marlene Whitney
Eric & Angela Wilds
Jerry & Margaret Wilson
Connie Windholz
Pat Windholz
Sarah Cearley-Windholz
Richard & Pamela Windholz
Dale & Heather Winklepleck
Colton & Jaci Wise
Curtis Wolf
Natalie Wood
Ruth Yerden
Neal & Carolyn Younger
Elaine Younger
John Ziegler

BUSINESSES/ORGS

ABC Seamless Siding of Hays
AdamsBrown, LLC
Advanced Real Estate-Lyn Klein
AgShield Crop Insurance Inc.
Astra Bank
Auto World
Bank of Hays
Bonnie & Clyde Oil, LLC
Brant's Market LLC
Brooke Kuntz Accounting Inc
CASA of the High Plains, Inc.
CERV'S LLC
City of Hays
City of Palco
City of Plainville
City of Stockton
City of WaKeeney
Classic Quality Body Shop
Cloud Storage Corp
Colby Glass & Sign Company
Commerce Bank
Commercial Builders, Inc.
Damar Community Foundation
Dane C. Hansen Foundation
Daniel R. Loftus, DDS
Daughters of Isabella #873
Dechant Manufacturing
Deines Construction, Inc.
Dewey's Mobile Detailing
Discount Siding Supply, L.P.
Downing-Nelson Oil Co., Inc.
Elevate Marketing Resources LLC
Ellis County Abstract & Title LLC
Ellis County
Ellis County Ministerial Alliance
Ellis High School Booster Club
Emprise Bank
eyeSMILE Vision and Dental
Fabrizius Plumbing
Farm Bureau Financial Services -
Hailey Ruggles, Agent
Farmers National Bank
Finish Line Lease Service
First Baptist Church of Hays
First Call For Help of Ellis County
First Federal Savings & Loan
First Kansas Bank
First State Bank- Plainville
Frontier Rentals, LLC
Garrett Insurance
Gibson Health Mart
Golden B Hydra Drilling
Golden Belt Bank, F.S.A.
Golden Edge Realty, LLC
Golden Plains Credit Union
Great Plains Dermatology
H&C Oil Operating Inc.
Hadley Foundation Inc
HHS Athletics Hall of Fame
Hays Rotary Club
High Plains Farm Credit
High Plains Mental Health Center
High Plains Roofing
Inheritance Oil
Insurance Planning, Inc.
Jeter Law Firm, LLP
Jones Oil Co. Inc.
Keller Tank Services II, Inc.
Keyser Hardware
KHJ Farms, LLC
Kiwanis Club of Hays
Lions Club of WaKeeney, KS
Lyons Federal Bank-Wakeeney
M&D Excavating, Inc.
M&D of Hays, Inc.
Malay's Market
Moeders Meats, LLC
Mongeau Farms
Mr. K's Foodtown, Inc.
Nana's Bounty LP
Nex-Tech
Nex-Tech Wireless
North Central Kansas Endowment
Association
Nutrien Ag Solutions - WaKeeney
Outdoor Bank
Palco Damar Zurich Recreation
Commission
Palco High School
Palmer Hargrave Lighting, LLC
Parking Spot Properties, LLC
Penco Engineering, PA
Plainville Community Foundation
Plainville Fire Department
Plainville Insurance, LLC
Plainville Kids Wrestling Club
Plainville Recreation Commission
Platinum Group LLC
Plumer-Overlease Funeral Home
PWC, Inc.
RC Leasing, LLC
Regeena's Flowers & Events, LLC
Riedel Garden Center Inc
Robert E. & Patricia A. Schmidt
Foundation
Rooks County
Rooks County Econ. Development

WITH GRATITUDE TO OUR DONORS

If you believe there is an error or need to make a correction, please contact us.

CONTINUED

From July 1, 2023-Dec. 30, 2024

Rooks County Health Center
Rooks County Health Center Aux.
Ruder Oil Co
Ruder Oil Crew
Sacred Heart Church & School
Schmitt Funeral Home
Simply Charmed Boutique
Solomon Valley Funeral Co., Inc.
Solutions North Bank Stockton
Solutions North Bank WaKeeney
Stahl Products LLC
STEM Harvest
Steve's Electric & Roustabout, LLC
Stockton Area United Fund
Stockton Recreation Commission
StrataKan Exploration, LLC
Sunflower Electric Power Corp.
Taylor's Aesthetics

The Arc of Central Plains
The Bank
The Beach-Edwards Family Fdn.
The Daily Grind Bakery
The Keller Company, Inc
The Meckenstock Group
The Paisley Pear
The Well - Center for Hope
Thomas M. Brown LLC
Thomas More Prep-Marian
Thunder on the Plains Car, Truck
& Cycle Show
Tracy's Plumbing, Heating, Air
Conditioning, LLC
Trash B Gone
Trego County
Trego Co. Chamber of Commerce
Trego County Enhancement Fdn.
Trego County Historical Society
Turnbull Advertising
TWI Insurance Services Inc
Union Pacific Foundation

USD 208 Recreation Commission
VFW Auxiliary #3449
Victoria High School
Victoria Recreation Commission
Victoria Youth Action Council
Volga German Centennial Assoc.
Werth Wealth Advisors, LLC
Werth Wealth Management LLC
Western Carriers, Inc.

In Memory of Andy Betzen
In Memory of Dr. Darrell & Betty
Phillips
In Memory of Fred & Jean Berger
In Memory of Fred Berger
In Memory of Gayle M Garrett
In Memory of Joan & Robert Gilbert
In Memory of John Fose
In Memory of Josh Hrabec
In Memory of Kristi Sook
In Memory of Mark
Hammerschmidt
In Memory of Myron Gerstner
In Memory of Rodger Dee Taylor
In Memory of Sam & Mary Ruth
McCune

HONORARIUM

In Honor of Brena Mauck
In Honor of Bridgett Harvey &
Luke Okolo
In Honor of John & Karla Ruder
Family
In Honor of Leikam & Schrandt
Families
In Memory of Allan Weber
In Memory of Ana Rose Hertel

*Thank you for your generosity and
commitment to making a difference in
our community. Your support helps us
create a brighter future for everyone in
the Heartland area.*

OUR MISSION:

*Inspire philanthropy with tools and resources to create community
prosperity through the power of giving in Ellis, Rooks, and Trego Counties.*

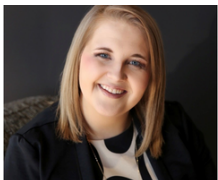
ADVISORY BOARD



PRESIDENT
Josh Dreher
Hays



PAST-PRESIDENT
Kelli Hansen
Plainville



SECRETARY
Katie Dorzweiler
Hays



TREASURER
Jude Fox
Hays

For Ellis County:
Michael Baxter
Joslyn Brungardt
Joleen Fisher
*Sandy Jacobs
*Nikki Pfannenstiel

For Trego County
Sara Brown
Trey Moeder
Cristi Werth
*Hardy Howard

For Rooks County:
Kayla Hilbrink
Donna Hudson-
Hamilton
Tammy McClellan
Mari Tucker
*Kathy Ramsay

**Denotes Board
Emeritus*

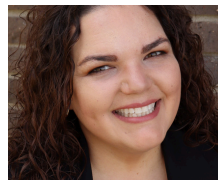
STAFF



EXEC. DIRECTOR
Sarah Meitner
sarahmeitner@gscf.org



TREGO DIRECTOR
Savannah Downing
savannah@gscf.org



ROOKS DIRECTOR
Deanna Hammerschmidt
deanna@gscf.org

OFFICES

1200 MAIN, #102
P.O. BOX 1673,
HAYS, KS 67601
785-621-4090

202 W. MILL
PLAINVILLE, KS
67663
785-688-5098

110 N. MAIN ST.
WAKEENEY, KS
67672
785-743-3270

REGIONAL STAFF

We are an affiliate of Greater Salina Community Foundation

Jessica Martin, **President & Executive Director**
Rita Northup, **Executive Assistant**
Michael Chambers, **VP of Community Impact**
Brandee Mayginnnes, **Director of Operations**
Kristin Blake, **Director of Finance**
Shanna King, **Staff Accountant**
Jessica Fuller, **Director of Grants & Scholarships**
Natalie Wood, **Affiliate Relations & Grants**
Julia Diaz, **Community Impact Team**
Leah Wilson, **Marketing and Communications**



ABOUT OUR FUNDS

At Heartland Community Foundation, we connect you with experienced leadership, grantmaking, and resources to make your charitable giving impactful. Whether you want to create a fund that reflects your values or contribute to an existing one, we offer flexible options to bring your philanthropic vision to life. By establishing your own fund, you can create a lasting impact on causes close to your heart, and if you prefer to give to an existing fund, your donation will help strengthen our community's growth and well-being for future generations.

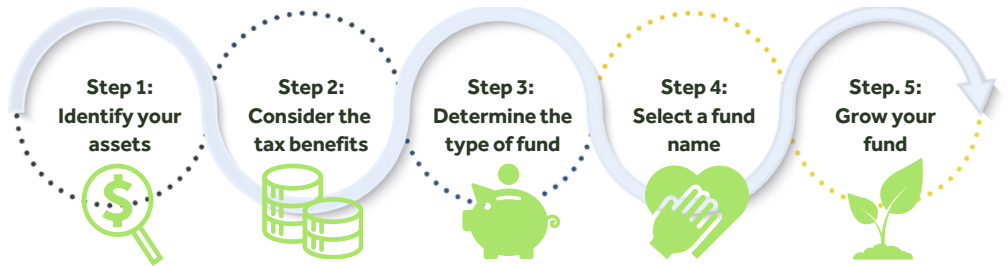
Who can start a fund?

Anyone! Whether you're an individual, family, business, or organization, you can start a fund at the Heartland Community Foundation. With a minimum of \$2,000, you can establish a fund tailored to your charitable goals, helping you make a lasting impact on the causes you care about most.

How do I get started?

Our experienced team is happy to discuss your vision and how we can help bring it to life. HCF will guide you through the process, from setting up your fund to making your first grant.

We're here to make your giving meaningful and impactful.



Types of Funds Available

Donor Advised Fund	Give to the causes YOU care about while creating a lasting legacy in your name. You make grants from your fund to nonprofits now or in the future, ensuring your values continue to make an impact for generations.
Designated Fund	Create a lasting impact by selecting a specific organization to receive annual contributions from your Designated Fund. Your gift ensures continued support for the causes you care about, year after year.
Field of Interest Fund	Support a cause or issue you're passionate about with a Field of Interest Fund. Your gift provides ongoing contributions to nonprofits within a specific area, creating a lasting impact on the community.
Organization Fund	Provides operational support to a specific nonprofit, ensuring they have a reliable source of funding for their ongoing work. This fund offers sustainable support to help the organization meet its long-term goals.
Scholarship Fund	Helps support students' educational goals by providing financial assistance. You can set criteria to target specific groups or fields of study, ensuring your gift supports the areas that matter most to you.
Unrestricted Fund	Give where it's needed most with an Unrestricted Fund. Your contribution provides flexible support to the Heartland Community Foundation, enabling grants to address emerging needs in the community.
Provisional Fund	Fund a special project or initiative with a Provisional Fund. Your gift supports a specific project or program, creating an immediate and lasting impact on the community's most pressing needs.

Types of assets we accept

We accept a variety of assets to open or contribute to a fund at HCF including cash, stocks, bonds, mutual funds, real estate, grain, oil, farmland, and appreciated assets such as artwork or collectibles. We also accept gifts from retirement accounts, life insurance policies, and more. Our team can help you navigate the options.



CONTACT US TO LEARN MORE:

202 W. Mill
Plainville, KS 67663
785-688-5098
Heartland@gscf.org

Where Giving Does More Good!
www.heartlandcommunityfoundation.org